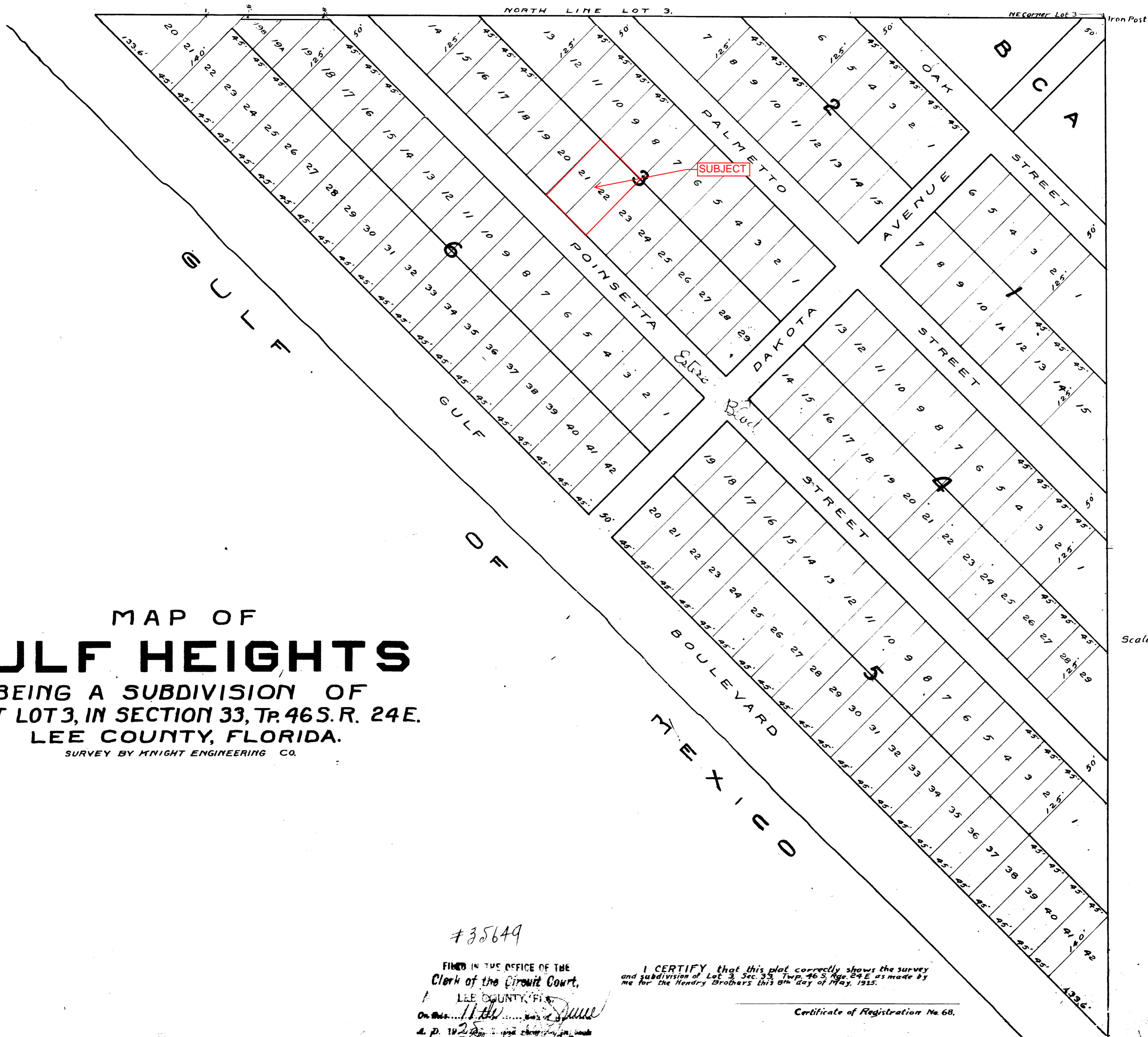


MAP OF  
**GULF HEIGHTS**  
 BEING A SUBDIVISION OF  
 GOV'T LOT 3, IN SECTION 33, TR. 46 S. R. 24 E.  
 LEE COUNTY, FLORIDA.  
 SURVEY BY KNIGHT ENGINEERING CO.



#35649

FILED IN THE OFFICE OF THE  
 Clerk of the Circuit Court,  
 LEE COUNTY, FLA.  
 On this 11th day of June  
 A. D. 1925  
 J. J. Garner

I CERTIFY that this plat correctly shows the survey  
 and subdivision of Lot 3, Sec. 33, Twp. 46 S, Rge. 24 E as made by  
 me for the Hendry Brothers this 6th day of May, 1925.

Certificate of Registration No. 68.